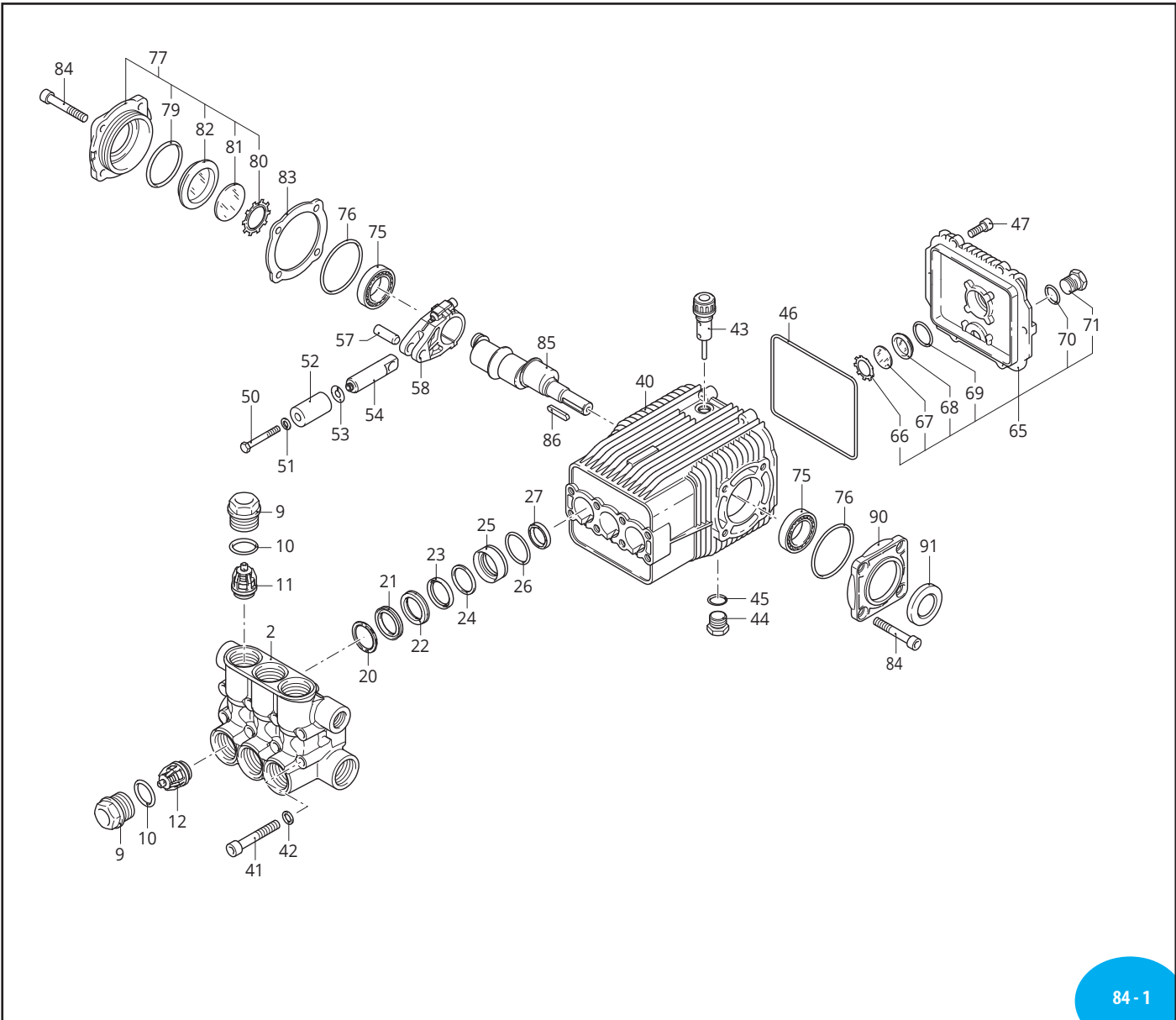
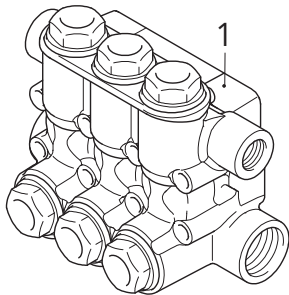


A.R. NORTH AMERICA XWP 1450 RPM



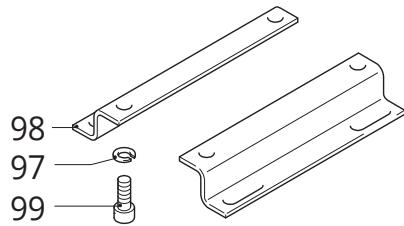
84 - 1

Complete Pump Head



84 - 2

Rails (Optional)



84 - 3

XWP 1450 RPM PARTS/KITS

Pos	Code	Description	Qty	Note
1	1949251	Complete Pump Head Ø30	1	
2	1943620	Blank Pump Head	1	
9	1943630	Valve Cap	6	
10	390291	O-ring	6	
11	3669051	Complete valve Outlet (Black Spring)	3	
12	3669050	Complete valve Inlet (Sliver Spring)	3	
20	1943650	Support ring Ø30.2x40x4.2	3	
21	1943660	High Pressure Seal Ø30x40x6	3	
22	1943670	Front Piston Guide Ø 30	3	
23	1943680	Low Pressure Seal Ø30x38x5.5	3	
24	3660500	Spacer	3	
25	1943700	Rear Piston Guide Ø30	3	
26	1140490	O-ring Ø37.82x1.78	3	
27	1943730	Oil Seal	3	
40	1941330	Pump body	1	
41	850260	Head Bolt TCEI M10x90	8	(442.54 in/lbs)
42	650530	Lock Washer	8	
43	1140370	Oil Cap (dipstick)	1	
44	1989600	Plug 3/8" G, Brass, w/O-ring	1	(177.01 in/lbs), Includes Pos 45
45	740290	O-ring Ø14x1.78	1	
46	1940410	O-ring Ø132x3	1	
47	1200430	Bolt TCEI M6x16	6	(88.51 in/lbs)
50	1941640	Piston Bolt TE M6x60	3	(61.96 in/lbs)
51	1340600	Washer Copper	3	
52	1943610	Piston Ø30	3	
53	1383190	Washer (slinger)	3	
54	1940960	Piston Rod	3	
57	1940060	Connecting Rod Pin	3	
58	1940051	Connecting Rod Alum.	3	▽ ○ ● □ (177.01 in/lbs)
	1943720	Connecting Rod Alum.	3	■
65	1949010	Complete Rear Cover	1	
66	1260430	Retainer Ring	1	
67	1780690	Sight Glass Diffuser	1	
68	1260250	Oil Sight Glass	1	
69	1140450	O-ring Ø 20.24x2.62	1	
70	740290	O-ring Ø14x1.78	1	
71	1989600	Plug 3/8" G, Brass, w/O-ring	1	(177.01 in/lbs), Includes Pos 70
75	1140410	Bearing	2	
76	1941380	O-ring Ø66.34x2.62	2	
77	1949011	Complete side Cover	1	
79	100410	O-ring Ø34.6x2.62	1	
80	1941290	Retainer Ring	1	
81	1941260	Sight Glass Diffuser	1	
82	1941270	Oil Sight Glass	1	

Pos	Code	Description	Qty	Note
83	1941390	Shim 0.05mm	1-3	
	1941400	Shim 0.10mm	1-3	
	1941410	Shim 0.19mm	1-3	
	1941420	Shim 0.25mm	1-3	
84	850370	Bolt TCEI M8x16	8	(216.84 in/lbs)
85	1940180	Shaft 3 ID Stamp	1	▽
	1943510	Shaft 12 ID Stamp	1	○
	1940160	Shaft 1 ID Stamp	1	●
	1940970	Shaft 7 ID Stamp	1	□
	1943710	Shaft 15 ID Stamp	1	■
86	650250	Key	1	
90	1941240	Open Bearing Support	1	
91	820681	Shaft Oil Seal	1	(88.51 in/lbs)
97	200231	Washer	4	
98	1940370	Rail	2	
99	1940380	Bolt TCEI 10x18	4	(442.54 in/lbs)

Pump Oil Part Number: AR64516 (16 oz)
Pump Oil Capacity 30.69 oz, QTY 2
Pumps are Prefilled with Oil from the Factory.
Change oil every 3-5 months or every 500 hours of operation.
Tightening torque (Tolerance + 0 ÷ -10%)

OPTIONAL PARTS/KITS

Pos	Code	Description	Qty	Note
2748		Rail Kit 1-1/4"	2 Rails, 2 Bolts, 4 Washers	1 Pos 97, 98, 99

LEGEND

Symbol	Material	Description
▽	-	XWP50.15N Ø 30
○	-	XWP55.14N Ø 30
●	-	XWP60.13N Ø 30
□	-	XWP65.12N Ø 30
■	-	XWP70.12N Ø 30

Valve Kit 42835	
Pos.	Qty
11	3
12	3

Piston Kit 43444	
Pos.	Qty
52	3

Water Seal Kit 43446	
Pos.	Qty
20	3
21	3
23	3
24	3
26	3

Oil Seal Kit 43445	
Pos.	Qty
27	3
46	1
76	2
91	1

COUNTRY OF ORIGIN: ITALY
LAST UPDATED: OCTOBER 2023