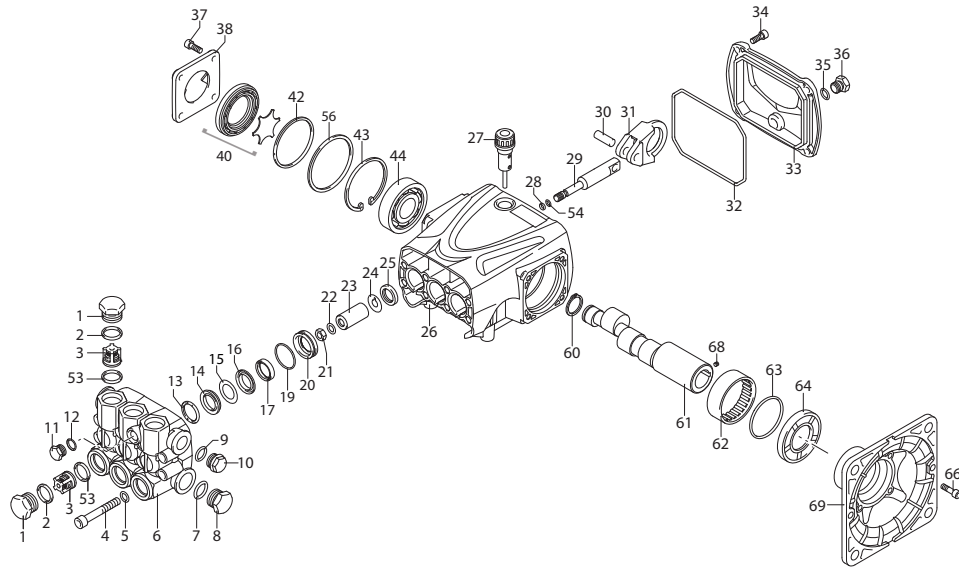


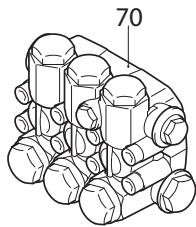
# A.R. NORTH AMERICA

## RRA 1750 RPM HOLLOW SHAFT

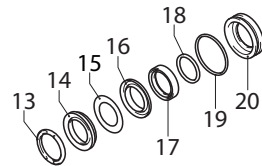


42 - 1

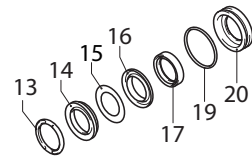
### Complete Pump Head



42 - 2



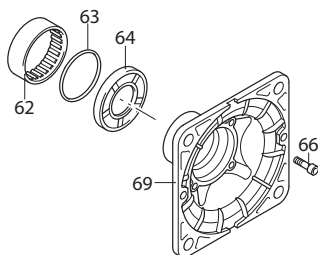
**Water Seals and Piston Guides  
BEFORE MAY 2022**



**Water Seals and Piston Guides  
AFTER MAY 2022**

42 - 3

### Complete Flange



42 - 4



# RRA 1750 HOLLOW SHAFT PARTS/KITS

Commercial  
Pumps

Pos	Code	Description	Qty	Note
1	960090	Valve Cap Brass (478 in/lbs)	6	
2	960160	O-Ring Ø 17.86x2.62	6	
3	1389051	Complete Valve	6	
4	800860	Head Bolt M8x55 (225 in/lbs)	6	
5	1381850	Lock Washer	8	
6	3220020	Blank Head	8	
7	180101	O-Ring Ø 17.5x2	1	
8	820361	Plug 1/2" G (345 in/lbs)	1	
9	740290	O-Ring Ø 14x1.78	1	
10	1989600	Plug 3/8" G Brass, w/O-ring (221 in/lbs)	1	
11	880581	Plug 1/4" G (133 in/lbs)	1	
12	820510	O-Ring Ø 10.82x1.78	1	
13	1780140	Support Ring Ø 18	3	
14	1780720	High Pressure Seal	3	
15	3200250	Ring	3	
16	3220130	Front Piston Guide	3	
17	3200142	Low Pressure Seal	3	
18	3200260	Fiber Ring	3	
19	770260	O-Ring Ø 23.52x1.78	3	
20	3220120	Rear Piston Guide	3	Before May 2022
	3221030	Rear Piston Guide	3	After May 2022
21	1260110	Nut M8 (106 in/lbs)	3	
22	1260100	Washer 8x13x0.50	3	
23	1780080	Piston Ø 18	3	
24	1260091	Washer (slinger)	3	
25	1260460	Oil Seal	3	
26	3220010	Pump Body	1	
27	880130	Oil Cap (Vented Dipstick)	1	
28	480480	O-Ring Ø 4.48x1.78	3	
29	3220060	Piston Rod	3	
30	3220070	Connecting Rod Pin	3	
31	3220040	Connecting Rod Alum.	3	
32	651540	O-Ring Ø 107.62x2.62	1	
33	3220030	Rear Cover	1	
34	3200220	Bolt TCEI M 6x16 (71 in/lbs)	4	
35	820510	O-Ring Ø 10.82x1.78	1	
36	880581	Plug 1/4" G (133 in/lbs)	1	
37	1200430	Bolt M 6x16 (92 in/lbs)	4	
38	3200070	Side Cover	1	
40	3229603	Oil Indicator	1	
42	650560	O-Ring Ø 56.82x2.62	1	
43	200390	Retainer Ring Ø i62	1	

Pos	Code	Description	Qty	Note
44	1981210	Bearing	1	
53	880830	O-Ring Ø 15.54x2.62	6	
54	1080550	Fiber Ring	3	
56	3220780	Washer Ø 61.8x0.5	1	
60	1260770	Retainer Ring Ø 25	1	○
	3220160	Hollow Shaft 1-1/8, 1 ID Stamp	1	●
61	3220180	Hollow Shaft 1-1/8, 1 ID Stamp	1	■
	3220400	Hollow Shaft 1-1/8, 3 ID Stamp	1	
62	3220260	Bearing	1	
63	3220430	O-Ring Ø 56.87x1.78	1	
64	3220270	Shaft Oil Seal	1	
66	780060	Bolt M6x25 (92 in/lbs)	4	
68	820440	Set Screw M6x6	1	
69	3220190	Blank F17 Flange	1	
70	42814	Complete Pump Head	1	

AR64516 Oil (16 oz) - Capacity 13.35 oz, QTY 1  
Pumps are Prefilled with Oil from the Factory.  
Change oil every 3-5 months or every 500 hours of operation.  
Tightening torque (Tolerance + 0 ÷ -10%)

OPTIONAL PARTS/KITS				
Pos	Code	Description	Qty	Note
1	960850	Valve Cap SST (478 in/lbs)	6	
1	960090T	Tapped Valve Cap Threaded 1/4" brass (478 in/lbs)	1	
1	960850T	Tapped Valve Cap Threaded 1/4" SST (478 in/lbs)	1	
	43192	Hot Water Seal Kit	1	
	41882	Complete F17 Flange Assembly	1	Pos 62, 63, 64, 69
	2745	Support Ring Kit	1	Pos 13
	42550	O-Ring Kit	1	Pos 2, 7, 9, 19, 28, 32, 35, 42

LEGEND		
Symbol	Material	Description
○	-	RRA3G30E
●	-	RRA4G30E
■	-	RRA5.5G26E

Valve Kit 2864	
Pos.	Qty
3	6
53	6

Piston Kit 2746	
Pos.	Qty
23	3

Oil Seal Kit 42555	
Pos.	Qty
25	3
64	1

Water Seal Kit 42549 Before May 2022	
Pos.	Qty
14	3
15	3
17	3
18	3
19	3

Water Seal Kit 47110 After May 2022	
Pos.	Qty
14	3
15	3
17	3
19	3

Piston Guide Kit 42548 Before May 2022	
Pos.	Qty
16	3
20	3

Piston Guide Kit 47109 After May 2022	
Pos.	Qty
16	3
20	3

**COUNTRY OF ORIGIN: CHINA/ITALY**  
LAST UPDATED: JUNE 2023