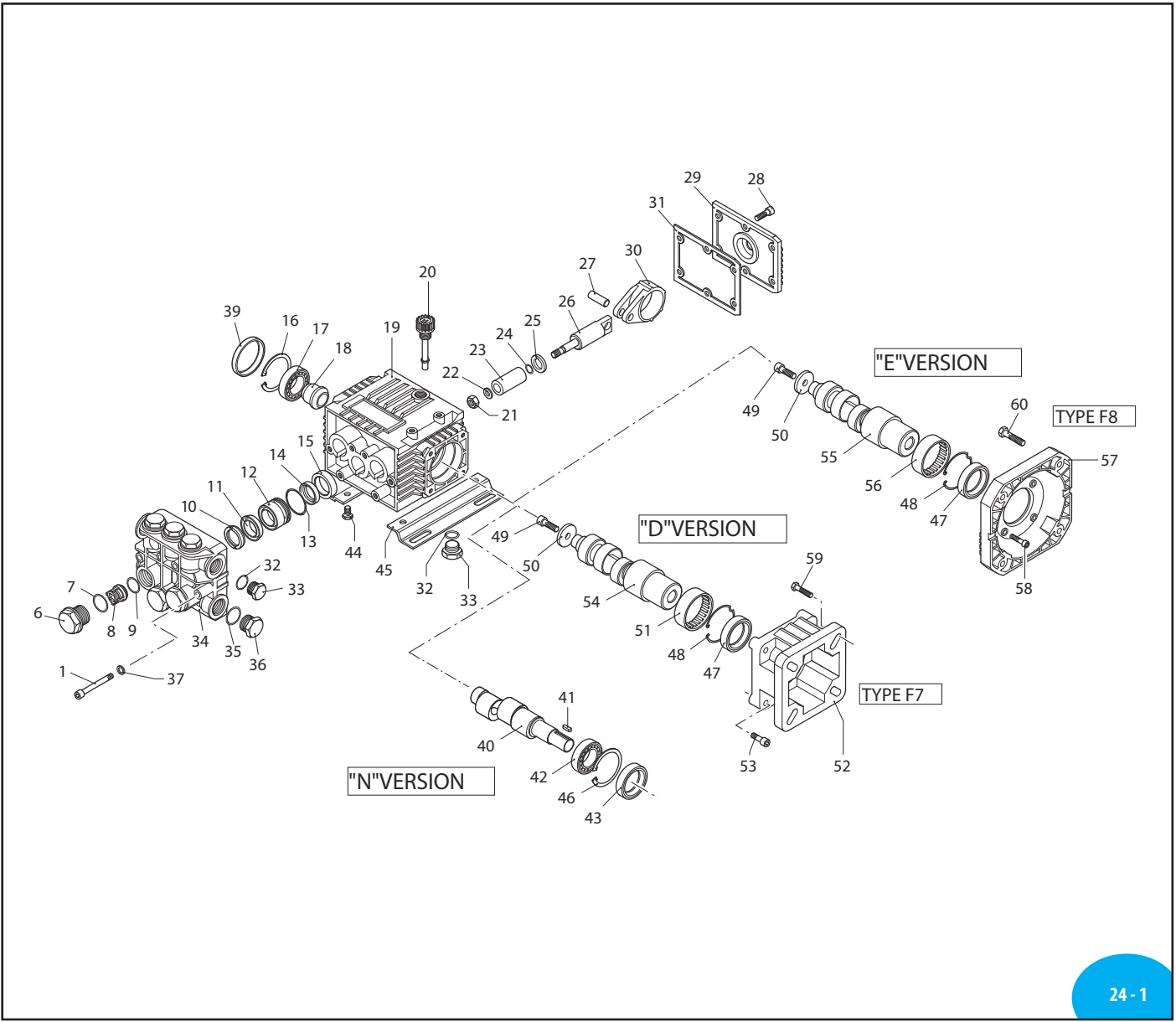
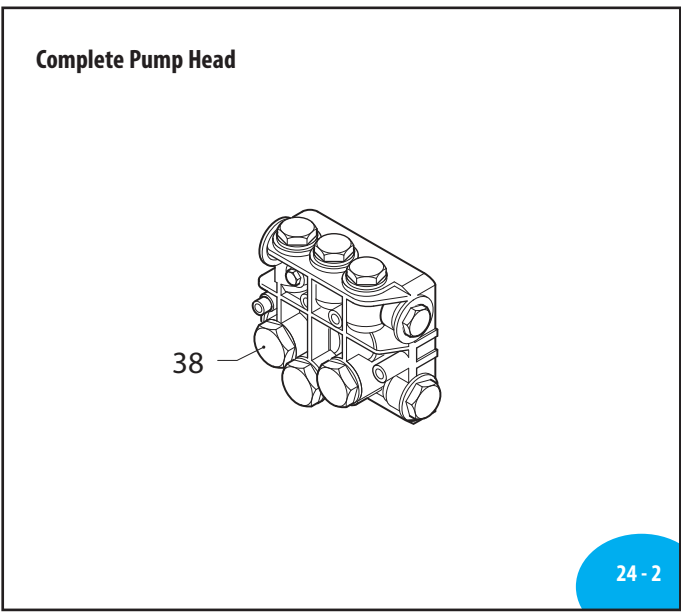


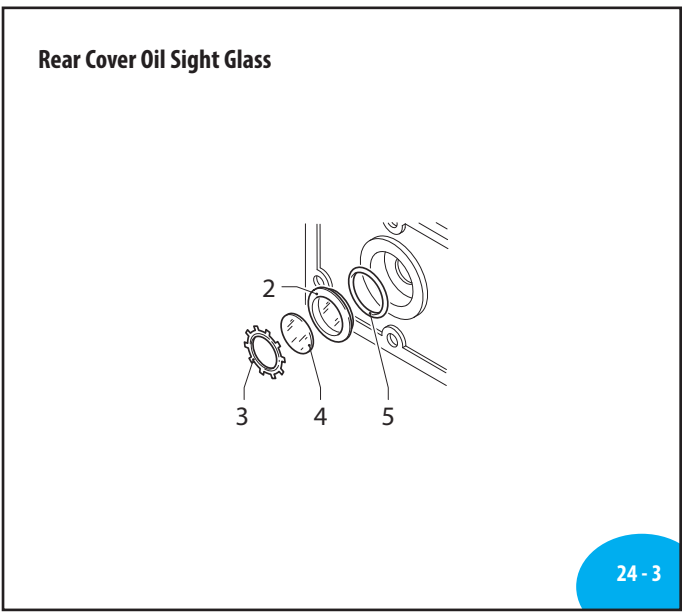
A.R. NORTH AMERICA XTV 3400 RPM



24 - 1



24 - 2



24 - 3

XTV 3400 RPM PARTS/KITS

Commercial
Pumps

Pos	Code	Description	Qty	Note
1	1322730	Head Bolt M6x60 (137 in/lbs)	6	
2	1260250	Oil Sight Glass	1	
3	1260430	Retainer Ring	1	
4	1780690	Site Glass Diffuser	1	
5	1140450	O-Ring Ø20.24x2.62	1	
6	1269657	Valve Cap w/O-ring, Forged (300 in/lbs)	6	
7	960160	O-Ring Ø17.86x2.62	6	
8	1269050	Complete Valve	6	
9	880830	O-Ring Ø15.54x2.62	6	
10	1520120	Support Ring Ø15	3	
11	1260130	High Pressure Seal Ø15	3	
12	1260151	Piston Guide Ø15	3	
13	1260420	O-Ring Ø26.70x1.78	3	
14	1260440	Low Pressure Seal	3	
15	1260460	Oil Seal	3	
16	1260790	Retainer Ring Øi52	1	
17	1320370	Bearing	1	
18	1320330	Bushing	1	
19	1320010	Pump Housing	1	
20	880130	Oil Cap (Vented Dipstick)	1	
21	1260110	Nut M8 (106 in/lbs)	3	
22	1260100	Washer 8x13x0.50	3	
23	1260120	Piston Ø15	3	
24	480480	O-Ring Ø4.48x1.78	3	
25	1260091	Washer (slinger)	3	
26	1260070	Piston Rod	3	
27	1260080	Piston Rod Pin	3	
28	1260760	Bolt M5x20 (48 in/lbs)	6	
29	1329010	Rear Cover	1	
30	1260060	Connecting Rod Alum.	3	
	1320140	Connecting Rod Bronze	3	
31	1260040	Gasket	1	
32	740290	O-Ring Ø14x1.78	2	
33	1989600	Plug w/O-ring, 3/8" G Brass	2	
34	1320022	Blank Head Brass Ø15	1	
35	180101	O-Ring 17.5x2	1	
36	820361	Plug 1/2" G Brass	1	
37	1381550	Lock Washer	6	
38	1269209	Complete Pump Head 15mm	1	
39	1266740	Bearing Cap	1	
40	1322150	Solid Shaft 24mm, B ID Stamp	1	○ ●
	1321790	Solid Shaft 24mm, C ID Stamp	1	■
41	1380520	Key	1	
42	1320370	Bearing (N Version Only)	1	
43	1260750	Shaft Oil Seal (N Version Only)	1	
44	1260470	Bolt M8x10	4	
45	1263890	High Rail 1-1/2" (N Version Only)	2	
	1260830	Low Rail 3/8" (N Version Only)	2	

Pos	Code	Description	Qty	Note
46	1260790	Retainer Ring Øi52 (N Version Only)	1	
47	480671	Shaft Oil Seal (D & E Version)	1	
48	1321080	Retainer Ring (D & E Version)	1	
49	390430	Bolt M6x25	1	
50	780230	Washer Ø6.5	1	
51	1321190	Bearing (D Version)	1	
52	1579	F7 Flange Gas Engine	1	
53	1200430	Bolt M6x16	4	
54	1321800	Hollow Shaft Ø 3/4", B ID Stamp	1	○ ●
	1321810	Hollow Shaft Ø 3/4", C ID Stamp	1	■
	1321820	Hollow Shaft Ø 5/8", D ID Stamp	1	○
55	1321830	Hollow Shaft Ø 5/8", E ID Stamp	1	■
	1323010	Hollow Shaft Ø 5/8", Y ID Stamp	1	▽
56	1321190	Bearing (E Version)	1	
57	1584	F8 Flange Electric Motor (NEMA 56-C)	1	
58	1200430	Bolt M6x16	4	
59	621710	Bolt 5/16"	4	
60	650610	Bolt 3/8"	4	

AR64516 Oil (16 oz) - Capacity 10 oz, QTY 1
Pumps are Prefilled with Oil from the Factory.
Change oil every 3-5 months or every 500 hours of operation.
Tightening torque (Tolerance + 0 - -10%)

OPTIONAL PARTS/KITS				
Pos	Code	Description	Qty	Note
	2029	Viton Water Seals Kit Ø15	1	
	2815	Water Seal Kit for up to 180° F Ø15 High Temp	1	
	1836	Rail Kit 3/8"-2 Rails & 4 Bolts (N Only)	1	Pos 44, 45
	1836H	Rail Kit 1-1/2"-2 Rails & 4 Bolts (N Only)	1	Pos 44, 45
6	1260162T	Tapped Valve Cap 1/4" threaded (300 in/lbs)	1	
6	1260163	Tapped Valve Cap 1/8" threaded (300 in/lbs)	1	

LEGEND				
Symbol	Material	Description	Qty	Note
▽	-	XTV0.5G10	Ø15	
○	-	XTV2G15	Ø15	
■	-	XTV3G16, XTV3G18, XTV3G20, XTV3G22	Ø15	
●	-	XTV2G18, XTV2G20, XTV2G22	Ø15	

Valve Kit 1864	
Pos.	Qty
8	6
9	6

Piston Kit 2628	
Pos.	Qty
21	3
22	3
23	3
24	3
25	3

Water Seal Kit 2520	
Pos.	Qty
10	3
11	3
13	3
14	3

Oil Seal Kit 1872 (N) Kit 1860 (D&E)	
Pos.	Qty
15	3
31	1
39	1
43(N)/47(D&E)	1

COUNTRY OF ORIGIN: ITALY
LAST UPDATED: APRIL 2023