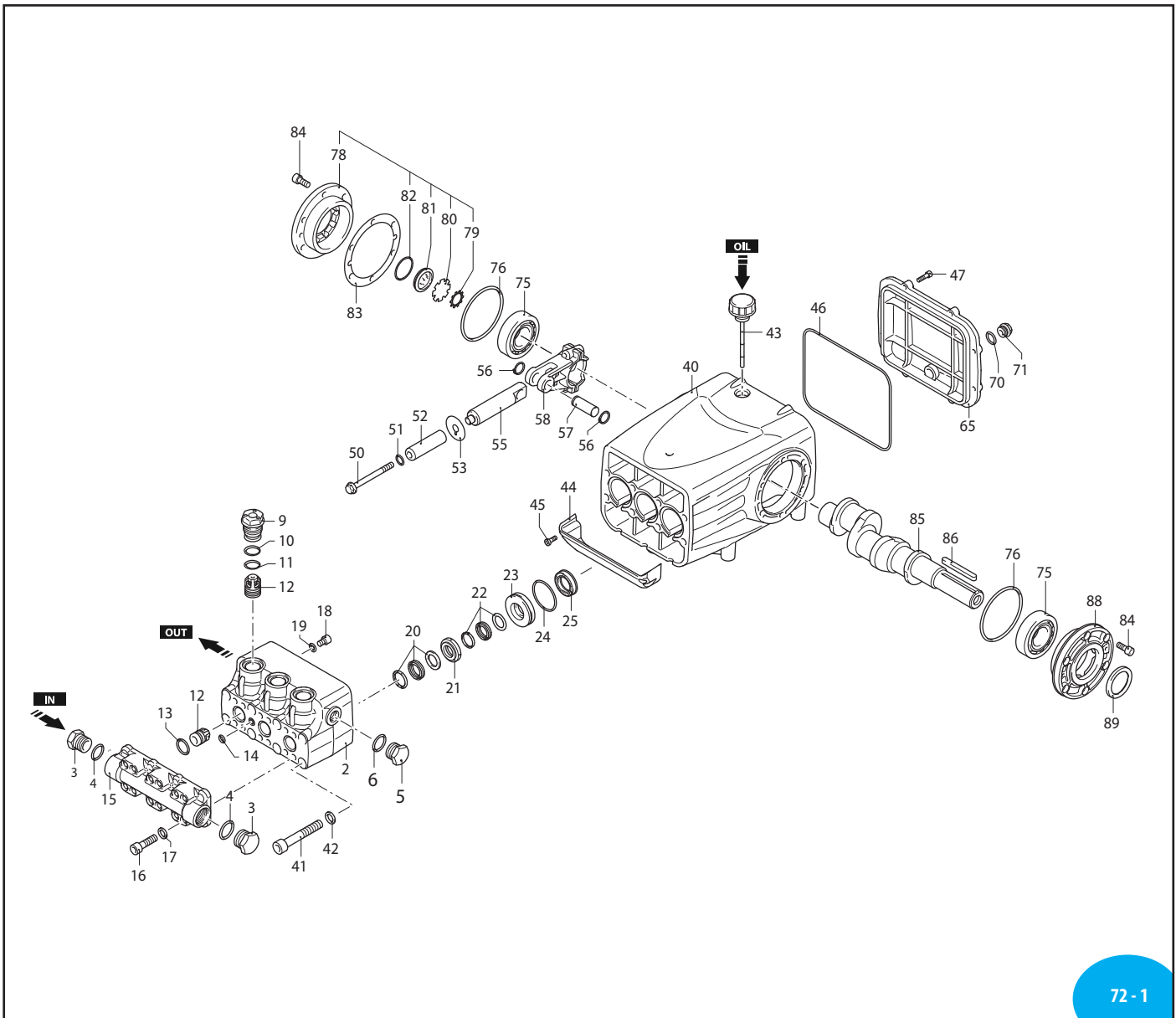
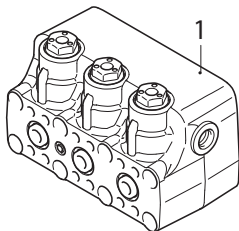


A.R. NORTH AMERICA

RTX 30.500 N 1450 RPM



Complete Pump Head



72 - 2



RTX 30.500 N 1450 RPM PARTS/KITS

Pos	Code	Description	Qty	Note
1	3669207	Complete Pump Head Ø20	1	
2	3660960	Blank Head	1	
3	1140480	Plug 3/4" G, H	2	309.78 in/lbs
4	550350	O-Ring Ø23.81x2.62	2	
5	3661300	Plug 3/8" G	1	442.54 in/lbs
6	740290	O-Ring Ø14x1.78	1	
9	1941800	Plug H	3	531.04 in/lbs
10	1941070	Fiber Ring	3	
11	880830	O-Ring Ø15.54x2.62	3	
12	3669052	Complete Valve	6	
13	720030	O-Ring Ø22.22x2.62	3	
14	800560	O-Ring Ø8.73x1.78	1	
15	3660970	Suction Fitting	1	
16	3661030	Bolt TCEI M8x40	12	
17	1381850	Lock Washer	12	
18	850252	Screw TCEI M8x12	3	177.01 in/lbs
19	2820500	Sealing Washer	3	
20	2820400	High Pressure Seals w/Support Ring Ø 20	3	
21	2820380	Front Piston Guide Ø20	3	
22	3660430	Low Pressure Seals w/Support Ring Ø 20	3	
23	3660240	Rear Piston Guide Ø20	3	
24	1320360	O-Ring Ø47.35x1.78	3	
25	3660310	Oil Seal	3	
40	3660010	Pump Body	1	
41	3661020	Head Bolt TCEI M10x110	8	442.54 in/lbs
42	650530	Lock Washer	8	
43	3660350	Oil Cap (Vented Dipstick)	1	
44	3661000	Guard	1	
45	2020570	Bolt TC 4x12	2	
46	3660360	O-Ring Ø183.82x2.62	1	
47	780330	Bolt TCEI M6x20	8	88.51 in/lbs
50	3660170	Piston Bolt	3	194.72 in/lbs
51	3660341	O-Ring Ø12x2	3	90 Sh
52	3660160	Piston Ø20	3	
53	3660180	Washer (Slinger)	3	
55	3660081	Piston Rod	3	
56	3660330	Ring	6	
57	3660090	Connecting Rod Pin	3	
58	3660990	Connecting Rod Bronze	3	194.72 in/lbs
65	3660030	Rear Cover	1	
70	740290	O-Ring Ø14x1.78	1	
71	2282280	Plug w/Magnet	1	177.01 in/lbs
75	3660290	Bearing	2	
76	3660740	O-Ring Ø83x3	2	
78	3660050	Side Cover w/Sight Glass	1	

Pos	Code	Description	Qty	Note
79	1941290	Retainer Ring	1	
80	1941260	Sight Glass Diffuser	1	
81	1941270	Oil Sight Glass	1	
82	100410	O-Ring Ø34.6x2.62	1	
83	3660260	Shim 0.05mm	1	
	3660270	Shim 0.10mm	1	
	3660280	Shim 0.19mm	1	
84	180030	Bolt TCEI M8x20	12	216.84 in/lbs
85	3660060	Solid Shaft 3 ID Stamp	1	
86	3660320	Key	1	
88	3660040	Side Cover Drive Side	1	
89	3660300	Shaft Oil Seal	1	

AR645107 Oil (SAE30) (1.07 gal) - Capacity 76 oz, QTY 1
 Pumps are Prefilled with Oil from the Factory.
 Change oil every 3-5 months or every 500 hours of operation.
 Tightening torque (Tolerance + 0 ÷ -10%)



Valve Kit 43762	
Pos.	Qty
12	6

Piston Kit 42836 (Ø20)	
Pos.	Qty
52	3

Water Seal Kit 43763 (Ø20)	
Pos.	Qty
20	3
22	3
24	3

Oil Seal Kit 42840	
Pos.	Qty
25	3
46	1
76	2
89	1

Piston Guide Kit 43764 (Ø20)	
Pos.	Qty
21	3
23	3

COUNTRY OF ORIGIN: ITALY
 LAST UPDATED: APRIL 2023