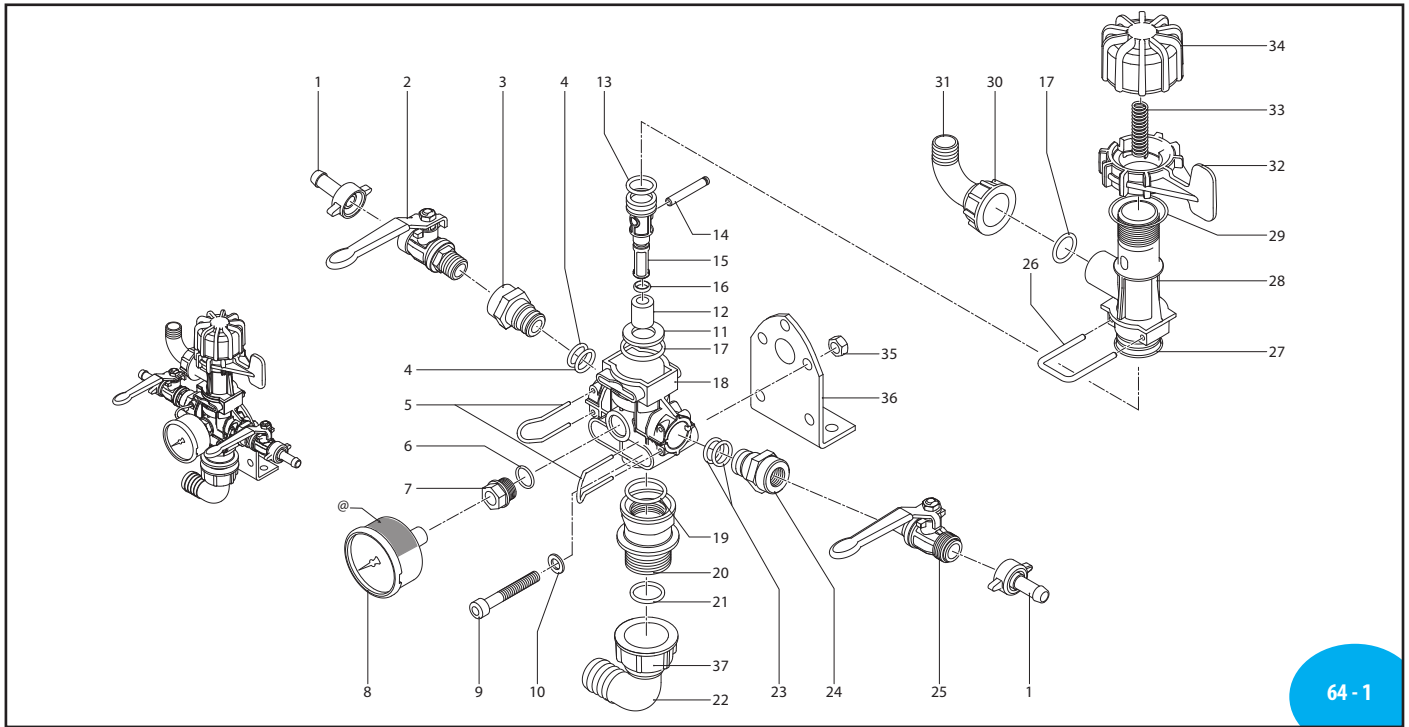


A.R. NORTH AMERICA

GS 25 S



Control units

Pos	Code	Description	Qty	Note
1	110131	Ring nut 1/2"	2	
2	130492	Ball valve 3/8" G - 1/2" G M-M SX	1	☉
3	3120421	Fitting 3/8" G F	1	
4	640070	O-ring Ø 13.95x2.62	2	☐
	640071	O-ring Ø 13.95x2.62	2	Viton ☐
5	392580	Fork	2	
6	2840890	O-ring Ø 14x2	1	
	2840891	O-ring Ø 14x2	1	Viton
7	1880250	Fitting	1	☉
8	3240470	Pressure gauge Ø 63	1	0-350 PSI ☉
9	800860	Screw TCEI M8x55	2	
10	380241	Washer	2	
11	3120310	Plug	1	
12	3120300	Piston lower	1	
13	480440	O-ring Ø 17.13x2.62	1	☐
	480441	O-ring Ø 17.13x2.62	1	Viton ☐
14	1880240	Pin	1	
15	3120290	Piston upper	1	☒
16	1123660	O-ring Ø 7.59x2.62	1	☒
	1123661	O-ring Ø 7.59x2.62	1	Viton ☒
17	880830	O-ring Ø 15.54x2.62	2	☒
	880831	O-ring Ø 15.54x2.62	2	Viton ☒
18	3120390	Body regulator	1	
19	200540	O-ring Ø 20.22x3.53	1	
19	200541	O-ring Ø 20.22x3.53	1	Viton
20	3120660	Threaded adapter 1" G - 3/4" G	1	
21	1140450	O-ring Ø 20.24x2.62	1	
	1140451	O-ring Ø 20.24x2.62	1	Viton
22	3120460	Elbow Ø 25	1	
23	640070	O-ring Ø 13.95x2.62	2	
23	640071	O-ring Ø 13.95x2.62	2	Viton
24	3120421	Fitting 3/8" G F	1	
25	130491	Ball valve 3/8" G - 1/2" G M-M DX	1	☉
26	3120320	Fork	1	
27	880310	O-ring Ø 26.65x2.62	1	90Sh
	880311	O-ring Ø 26.65x2.62	1	90Sh Viton
28	3120280	Body regulator	1	☒
29	961240	O-ring Ø 31.47x1.78	1	
30	550450	Ring nut 3/4" G	1	
31	550460	Elbow Ø 18	1	
32	1880210	Ring nut	1	
33	3120370	Spring	1	☒
34	1880220	Knob	1	
35	390270	Nut M8	2	T90*
36	320406	Bracket	1	
37	3120440	Ring nut 1" G	1	

@ Pump and manufacturer identification.

* Torque: in-lbs +/- 10%