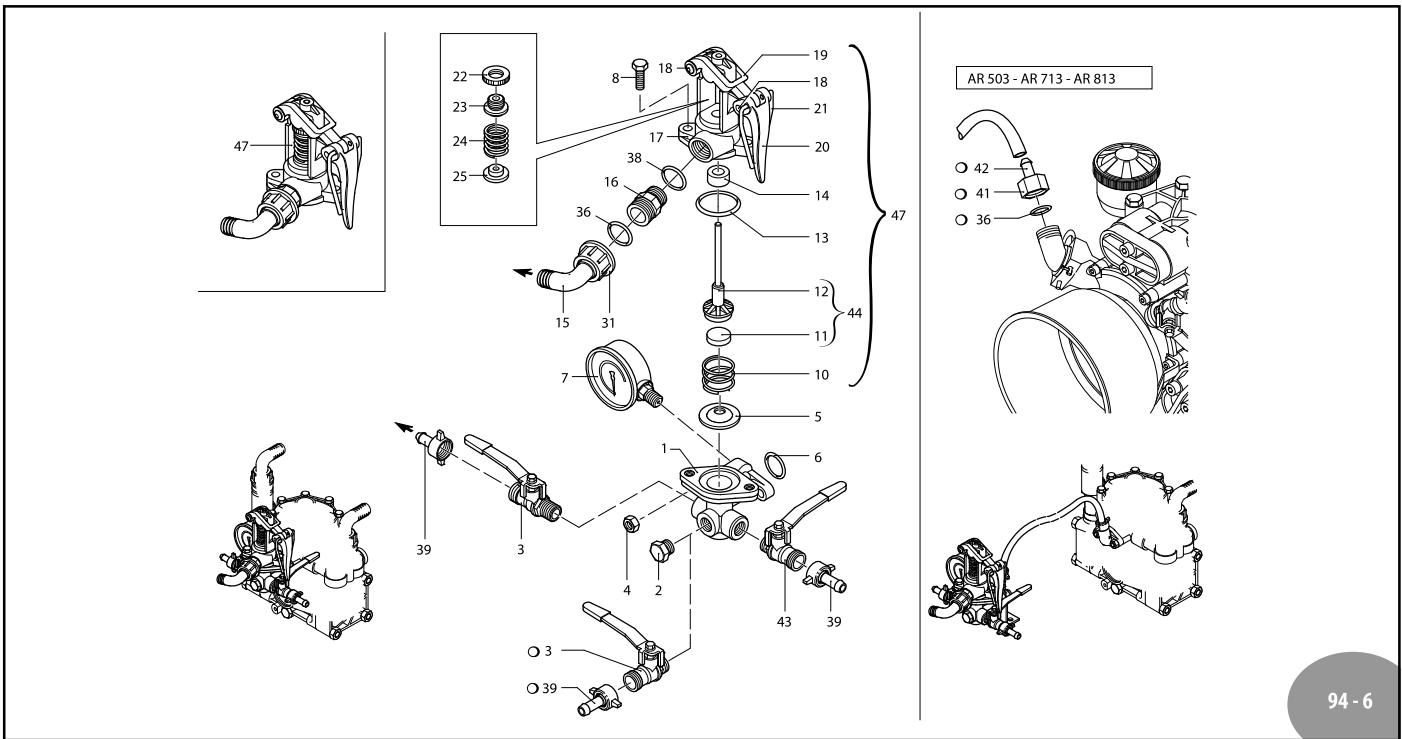


# A.R. NORTH AMERICA

## GI 40 / GIC40



Pos	Code	Description	Qty	Note
1	620220	Relief valve body	1	
2	130171	Plug	1	T180*
3	130491	Ball valve	2	3/8" G - 1/2" G M-MDX
4	390270	Nut	2	M8 T180*
5	450110	Seat	1	GI40
5	450112	Seat	1	GI40
6	550350	O-ring	2	Ø 23.81X2.62
7	550545	Pressure gauge	1	0-1150 PSI
8	180370	Bolt	2	TE M8x25 T180*
10	320420	Spring	1	
11	110121	Seat	1	Desmopan
11	110120	Seat	1	Buna
11	110122	Seat	1	Viton GI40
11	450112	Seat	1	Ceramic GIC40
12	320433	Stem	1	
13	320511	O-ring	1	Ø 37.8x4
14	390140	Gasket	1	GI40
14	390141	Gasket	1	Viton GI40
15	550460	Elbow	1	3/4"
16	550440	Fitting	1	1/2" G - 3/4 G M-M
17	320410	Body valve	1	GI40
17	320411	Body Valve	1	GI40
18	320480	Hub pin	2	
19	320460	Fork	1	
20	320470	Lever	1	
21	320490	Support	1	
22	320450	Retaining washer	1	
23	320440	Ring nut	1	
24	110190	Spring	1	
25	230120	Retaining washer	1	
28	320406	Bracket	1	
30	450145	Flange	1	
31	550450	Ring Nut	1	3/4"
33	160660	Bolt	2	TE M8x35 T90*
36	880830	O-ring	1	Ø 15.54x2.62
38	180101	O-ring	1	Ø 17.5x2
39	110131	Ring nut / HB	2	1/2" x 3/8" Optional
39	110130	Ring nut / HB	2	1/2" x 1/2"
41	1040790	Ring nut	1	3/4" G
42	1150580	Hose barb	1	Ø 13
43	130492	Ball valve	1	3/8" G - 1/2" G M-MSX

Pos	Code	Description	Qty	Note
44	329202	Seat	1	Guide assembly GIC40
47	1923	Valve kit	1	Adjustment GI40
o Not included				
* Torque: in-lbs +/- 10%				

AR 1757 Viton valve seats (GI40)		AR 1925 Desmopan valve seats (GI40)		AR 46016 Ceramic valve seats (GIC40)	
Pos.	Qty	Pos.	Qty	Pos.	Qty
5	1	5	1	5	1
10	1	10	1	10	1
11	1	11	1	11	1
12	1	12	1	12	1
13	1	13	1	13	1
14	1	14	1	14	1

